

27 Warwick Road, Chorlton, Manchester, M21 0AX



JP & Brimelow
ESTATE AGENTS



****VIDEO TOUR AVAILABLE**** An attractive and spacious, FOUR DOUBLE BEDROOM, bay fronted, period mid-terrace property situated in a highly desirable residential location in the heart of Chorlton. Close to all local amenities including restaurants, delis and shops and the Metro link station on Wilbraham Road, giving you direct access to City life and Media City at Salford Quays.

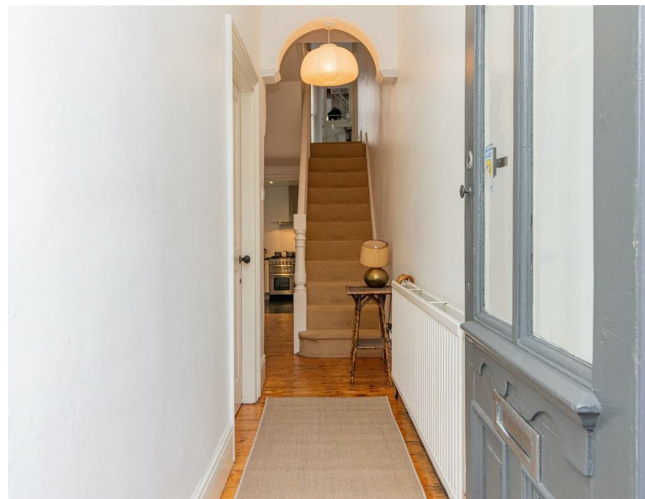
The well-planned accommodation comprises of; A welcoming entrance hallway, a through lounge/dining room with a bay window to the front aspect and a fully fitted kitchen with access out into the rear enclosed courtyard to the ground floor.

To the first floor there are two double bedrooms, a spacious three-piece family bathroom and a separate W.C, whilst the second floor reveals a landing that leads to two further double bedrooms to complete this fantastic home.

The property benefits from many period features throughout, high ceilings, ceiling coving, gas fired central heating, a useful chamber cellar and an enclosed courtyard style garden to the rear aspect.

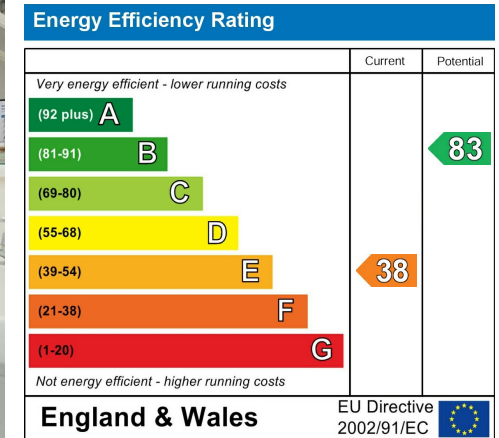
Internal inspection highly recommended to appreciate this stunning family home.

£525,000



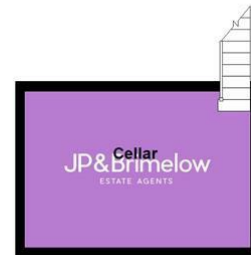


EPC Chart



Tenure: Freehold Council Tax Band: C

Basement



Ground Floor



First Floor



Second Floor



Chorlton & Didsbury Ltd
430 Barlow Moor Road, Chorlton, Manchester, M21 8AD
Chorlton: 0161 882 2233 Didsbury: 0161 448 0622
E: chorlton@jpbrimelow.co.uk www.jpbrimelow.co.uk



JP&Brimelow
ESTATE AGENTS

NOTICE: JP & Brimelow Chorlton & Didsbury Ltd for themselves and for the vendors or lessors of this property whose agents they are give notice that:

- (i) the particulars are set out as a general outline only for the guidance of intending purchasers or lessees, and do not constitute, nor constitute part of, an offer or contract;
- (ii) all descriptions, dimensions, references to the condition and necessary permissions for use and occupation, and other details are given in good faith and are believed to be correct but any intending purchasers or tenants should not rely on them as statements or representations of fact but must satisfy themselves by inspection or otherwise as to the correctness of each of them;
- (iii) no person in the employment of JP & Brimelow Ltd has any authority to make or give any representation or warranty whatever in relation to this property.



Follow us on Twitter @jpandbrimelows

